



INVESTASI DAN PENDAPATAN ASLI DAERAH

Hendri Saparini, Ph.D

saparini@coreindonesia.org

www.coreindonesia.org

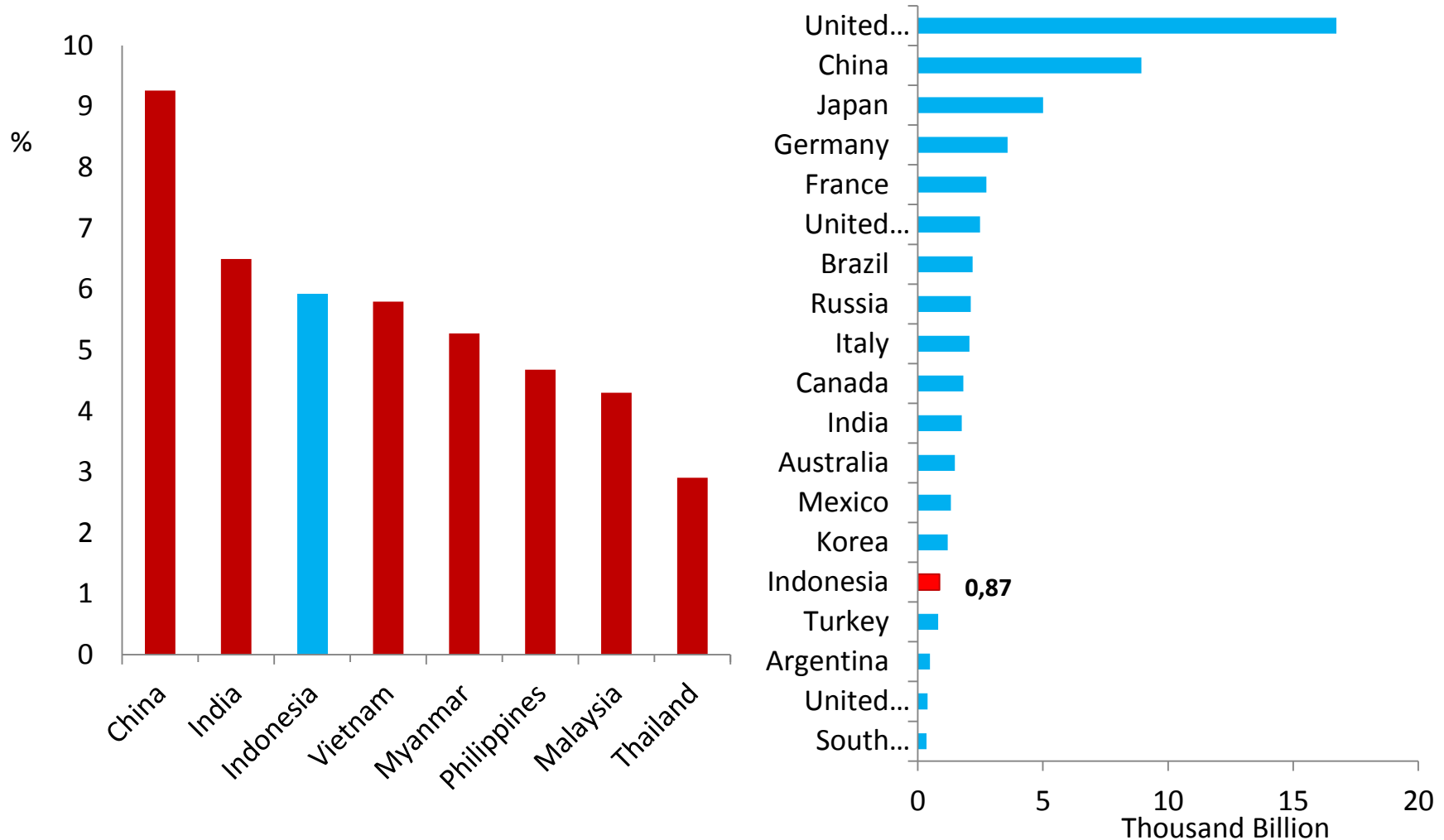
Seminar Mahasiswa STIAM I

Bekasi, 29 Maret 2015

Potensi Investasi dan Perdagangan

Indonesia Ekonomi Penting Dunia

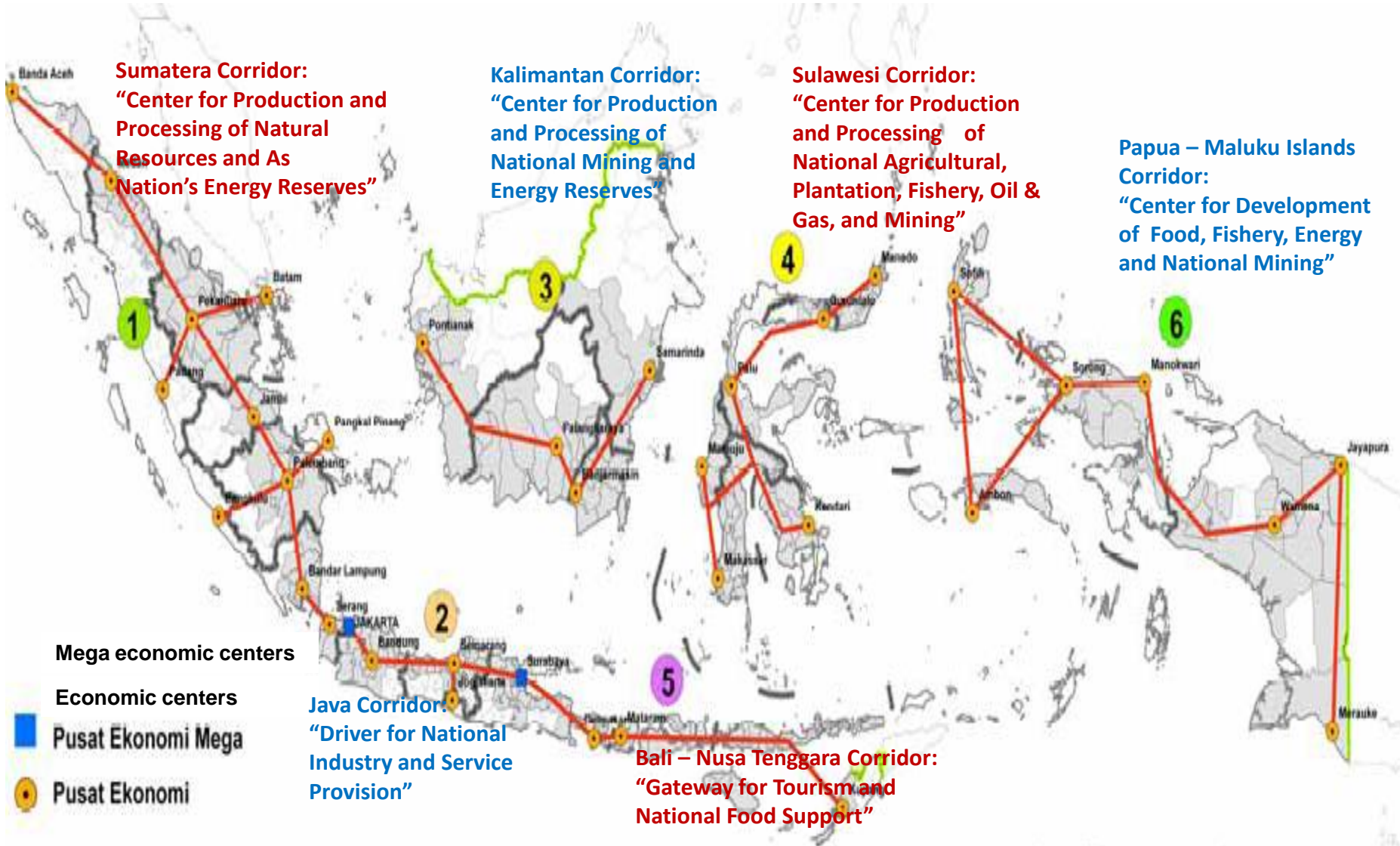
Pertumbuhan Stabil dan Tertinggi Ke 3 dan GDP No. 16 Dunia



Ranking	Product	Exported Value (bill. US\$)	Share Export (%)	Share in world exports (%)	Ranking in world exports
1	Coal	24.29	12.8	19	2
2	Petroleum gases	20.52	10.8	5	5
3	Palm oil & its fraction	17.60	9.3	46	1
4	Crude petroleum oils	12.29	6.5	1	23
5	Natural rubber	7.86	4.1	22	3
6	Copper ores and concentrates	2.59	1.4	5	5
7	Coconut (copra)	2.46	1.3	45	1
8	Petroleum coke	2.38	1.3	11	2
12	Unwrought tin	2.05	1.1	34	1
13	Plywood	2.01	1.1	14	2
Total 10		94.07	49.5		

MP3EI: Enam Koridor Ekonomi

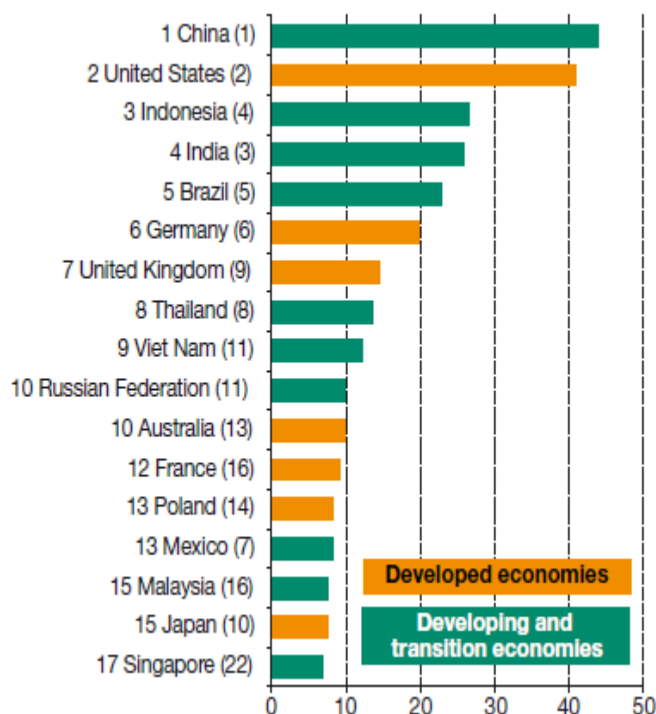
Tiap Daerah memiliki potensi dan daya saing berbeda



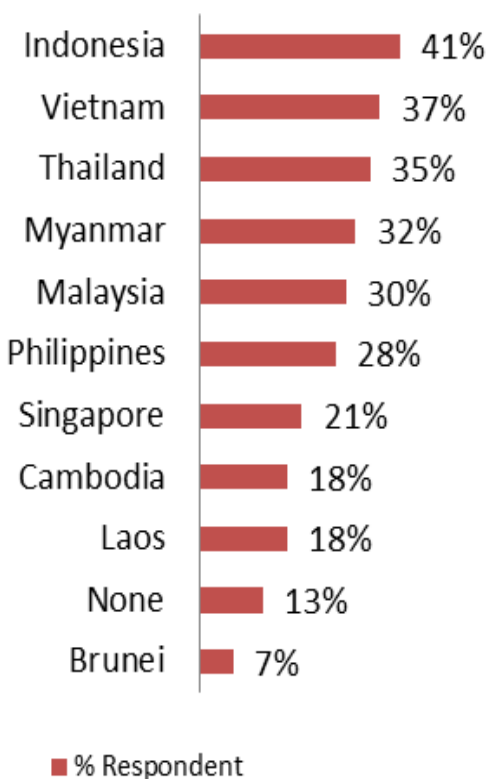
PMA Primer dan Sekunder Akan Tumbuh Lebih Tinggi

Indonesia tujuan investasi utama

UNCTAD: Indonesia's ranking rose from position 4 to 3 as a prime investment destination 2014-2016



American business representatives: popular location in ASEAN for business expansion

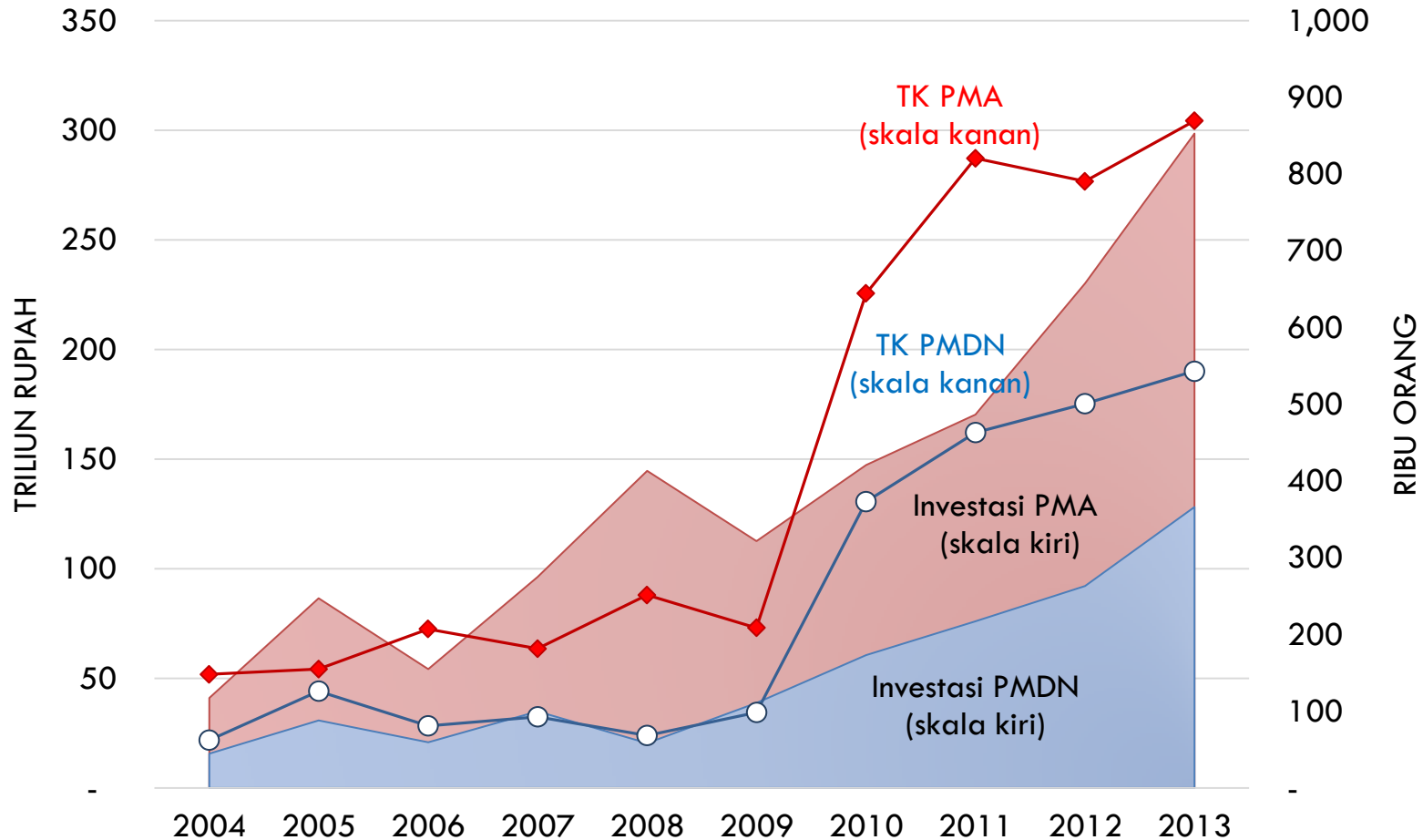


Promising Countries For Japanese FDI (JBIC)

Ranking		Country/Region (Total)	No. of Companies		Percentage Share(%)	
			2013	2012	2013	2012
			488	514		
1	↑	Indonesia	219	215	44.9	41.8
2	—	India	213	290	43.6	56.4
3	↑	Thailand	188	165	38.5	32.1
4	↓	China	183	319	37.5	62.1
5	—	Vietnam	148	163	30.3	31.7
6	—	Brazil	114	132	23.4	25.7
7	—	Mexico	84	72	17.2	14.0
8	↑	Myanmar	64	51	13.1	9.9
9	↓	Russia	60	64	12.3	12.5
10	↓	USA	54	53	11.1	10.3
11	↑	Philippines	39	21	8.0	4.1
12	↓	Malaysia	37	36	7.6	7.0
13	↓	Korea	28	23	5.7	4.5
14	—	Taiwan	23	22	4.7	4.3
14	↓	Turkey	23	23	4.7	4.5
16	—	Singapore	19	16	3.9	3.1
17	—	Cambodia	12	13	2.5	2.5
18	↑	Germany	10	6	2.0	1.2
18	↑	South Africa	10	3	2.0	0.6
20	↑	Laos	9	3	1.8	0.6

Investasi Langsung Tumbuh

PMA dan PMDN

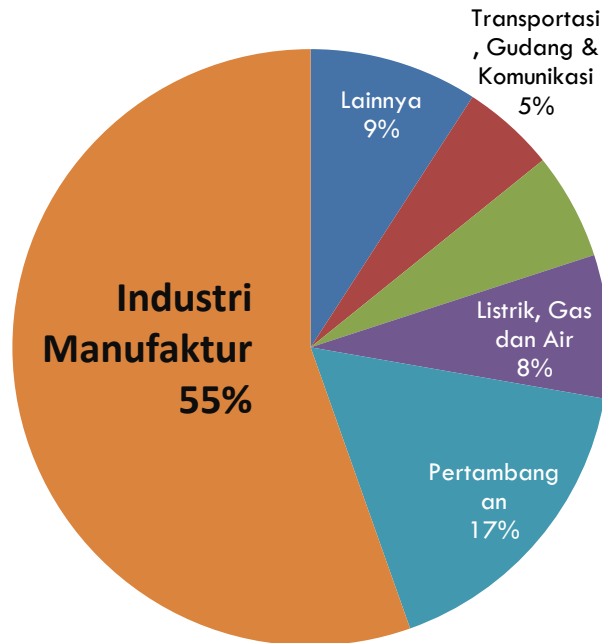


Sumber: BKPM

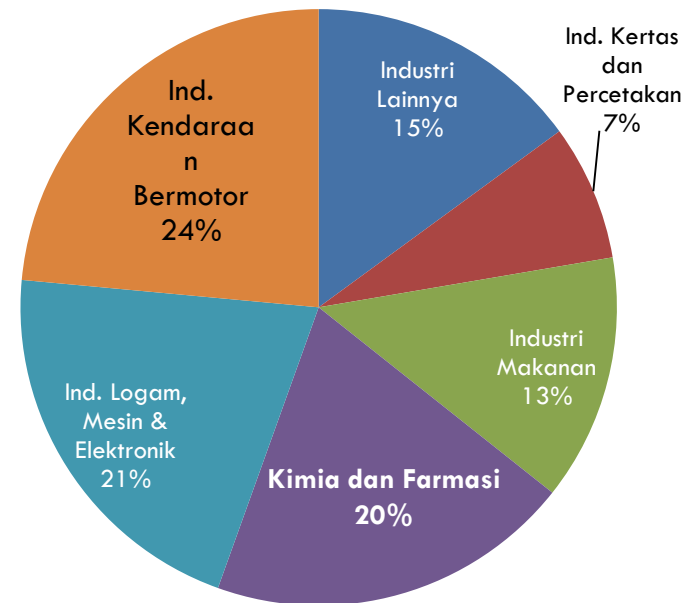
Penanaman Modal Asing 2013

Industri kendaraan bermotor mendominasi

PMA Menurut Sektor



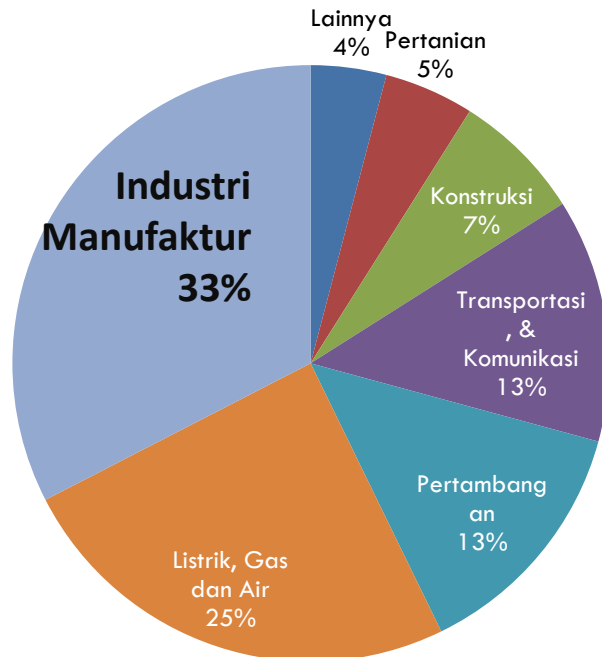
Dominasi Manufaktur



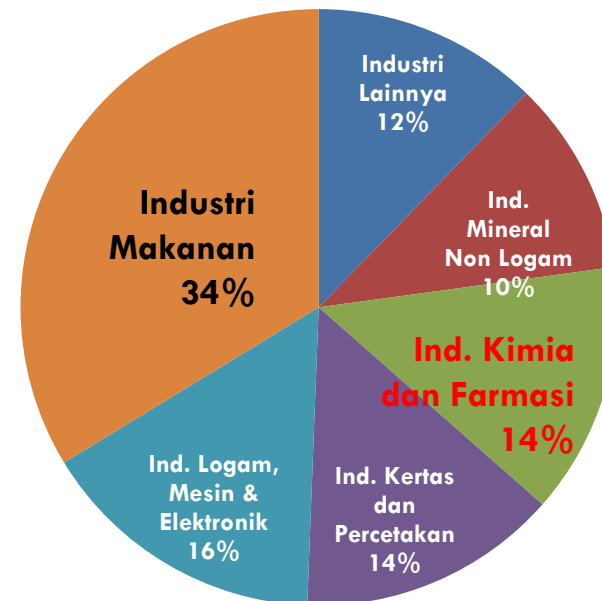
Penanaman Modal Domestik, 2013

Industri makanan masih menjadi primadona

PMDN Menurut Sektor

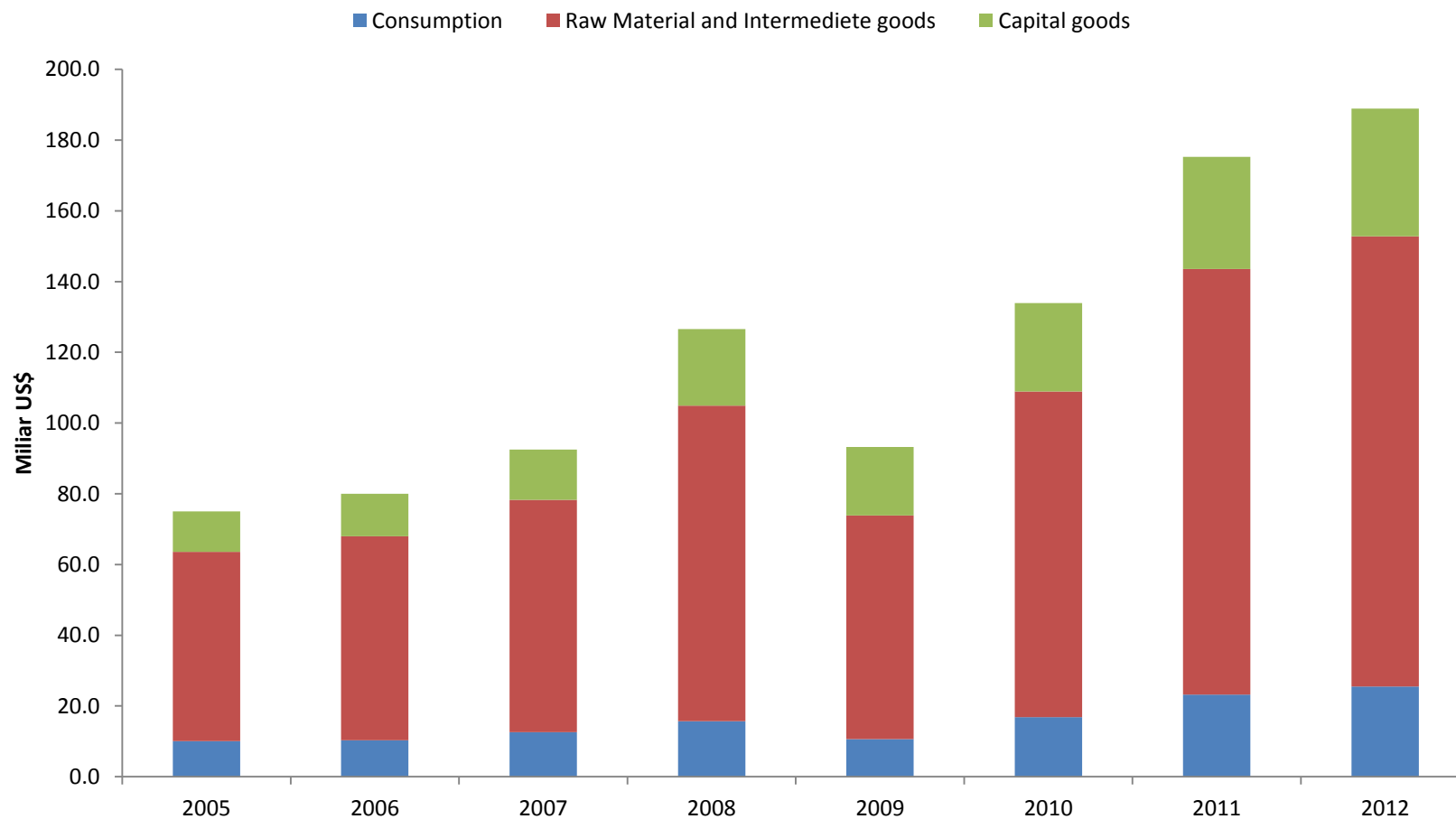


Dominasi Manufaktur



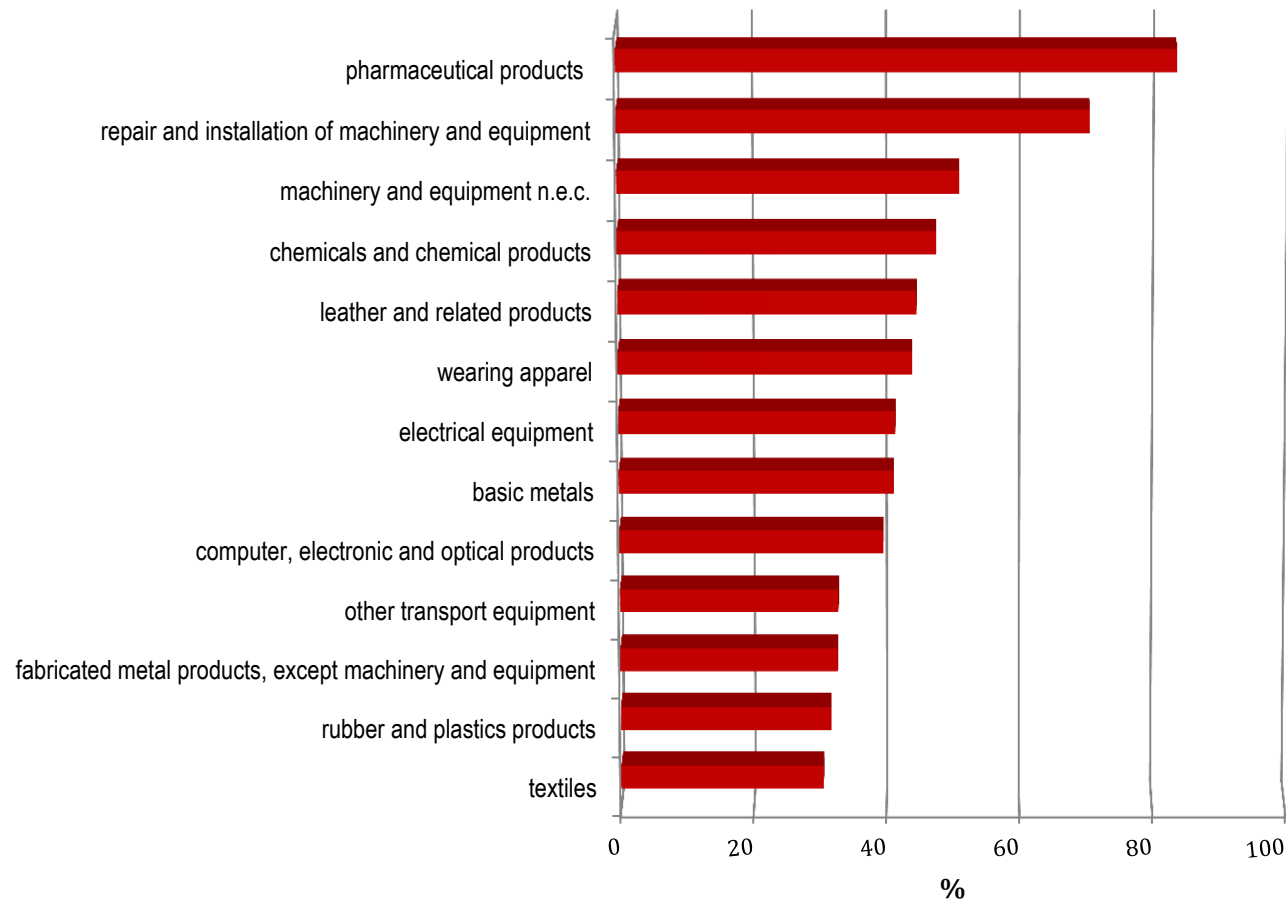
Investasi Untuk Penguatan Daya Saing

.....ketergantungan tinggi pada impor
impor *raw material* dan *intermediate goods*



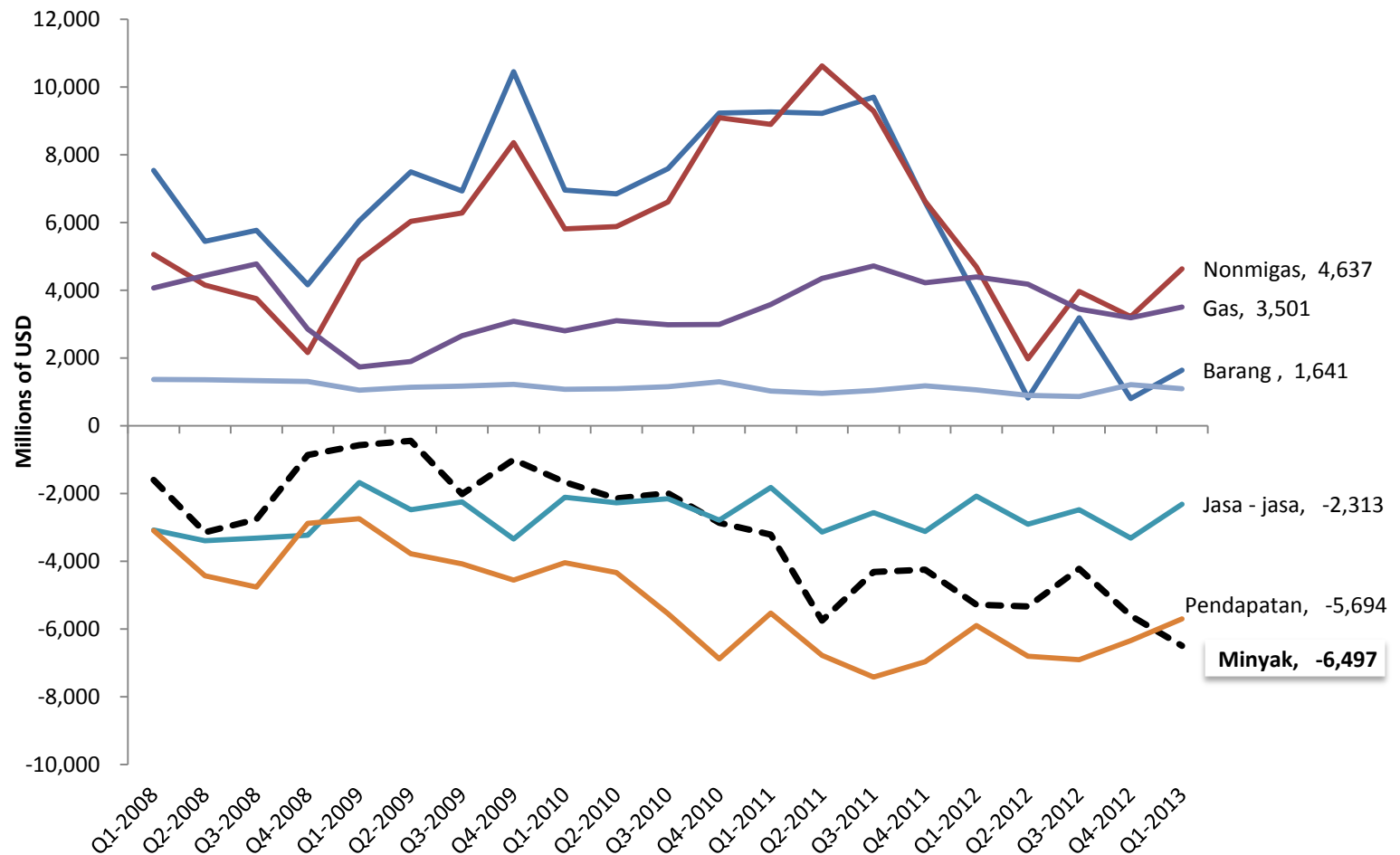
Struktur Impor: 70% Bahan Baku dan Penolong

Ketergantungan harus diselesaikan dengan membangun supporting industri



Defisit Transaksi Berjalan Tidak Mudah Diselesaikan

Defisit neraca minyak, pendapatan dan jasa, akibat permasalahan struktural



ASEAN COMMUNITY

ASEAN SOCIAL AND CULTURAL
COMMUNITY

ASEAN ECONOMIC COMMUNITY

ASEAN POLITICAL AND SECURITY
COMMUNITY

Single Market and
Production Base

Free Flow of Goods

Free Flow of Services

Free Flow of Investment

Free Flow of Capital

Free Flow of
Skilled Labour

Priority Integration
Sectors

Food, Agriculture,
Forestry

Competitive
Economic Region

Competition Policy

Consumer Protection

Intellectual Property
Rights

Infrastructure
Development

Taxation

e-Commerce

Equitable Economic
Development

SME Development

Initiative for ASEAN
Integration

Integration into the
Global Economy

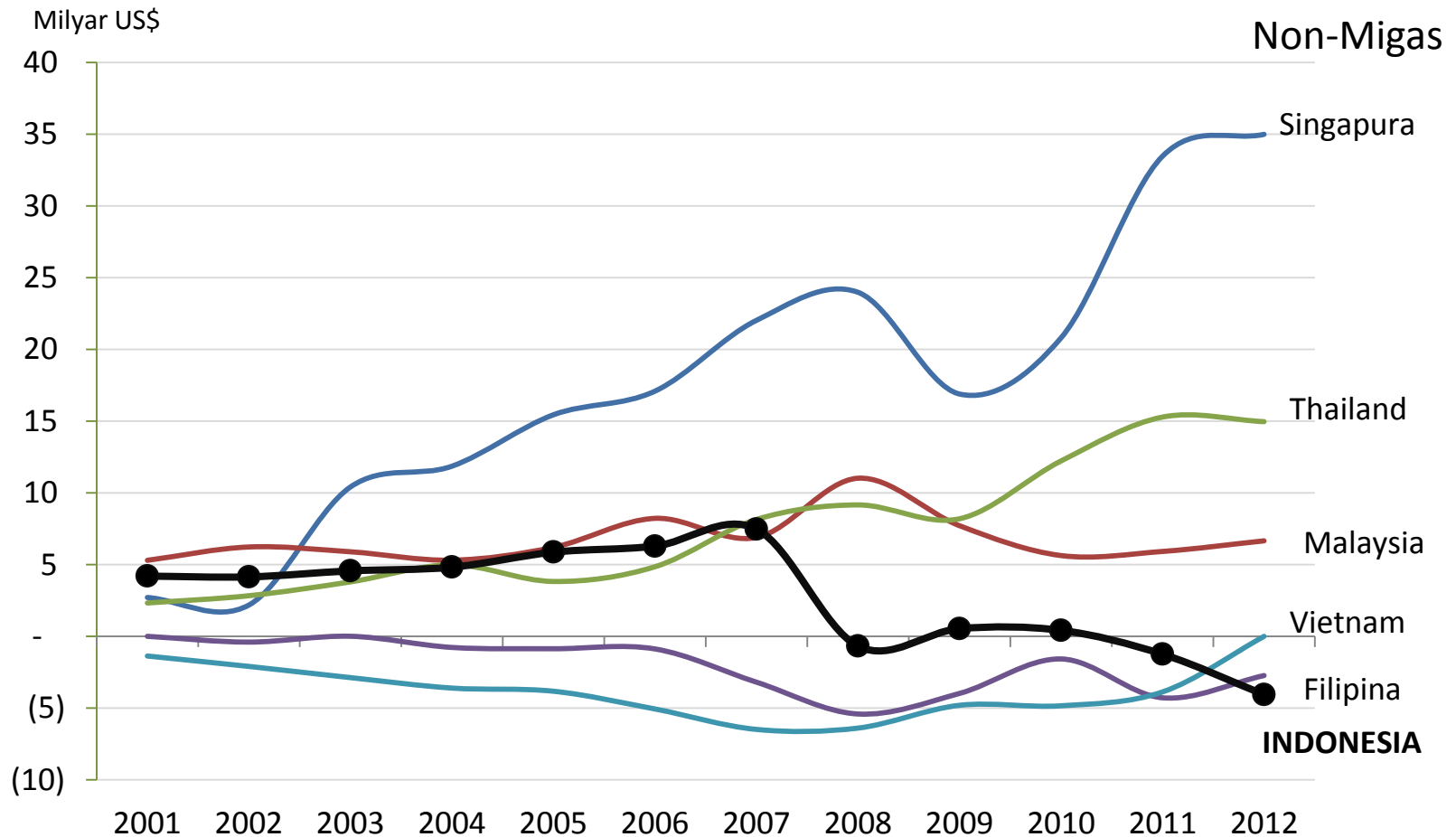
Coherent approach
towards external
economic relations

Enhanced
participation in global
supply networks

Neraca Perdagangan Intra-ASEAN:

kinerja Indonesia relatif paling buruk, defisit makin melebar

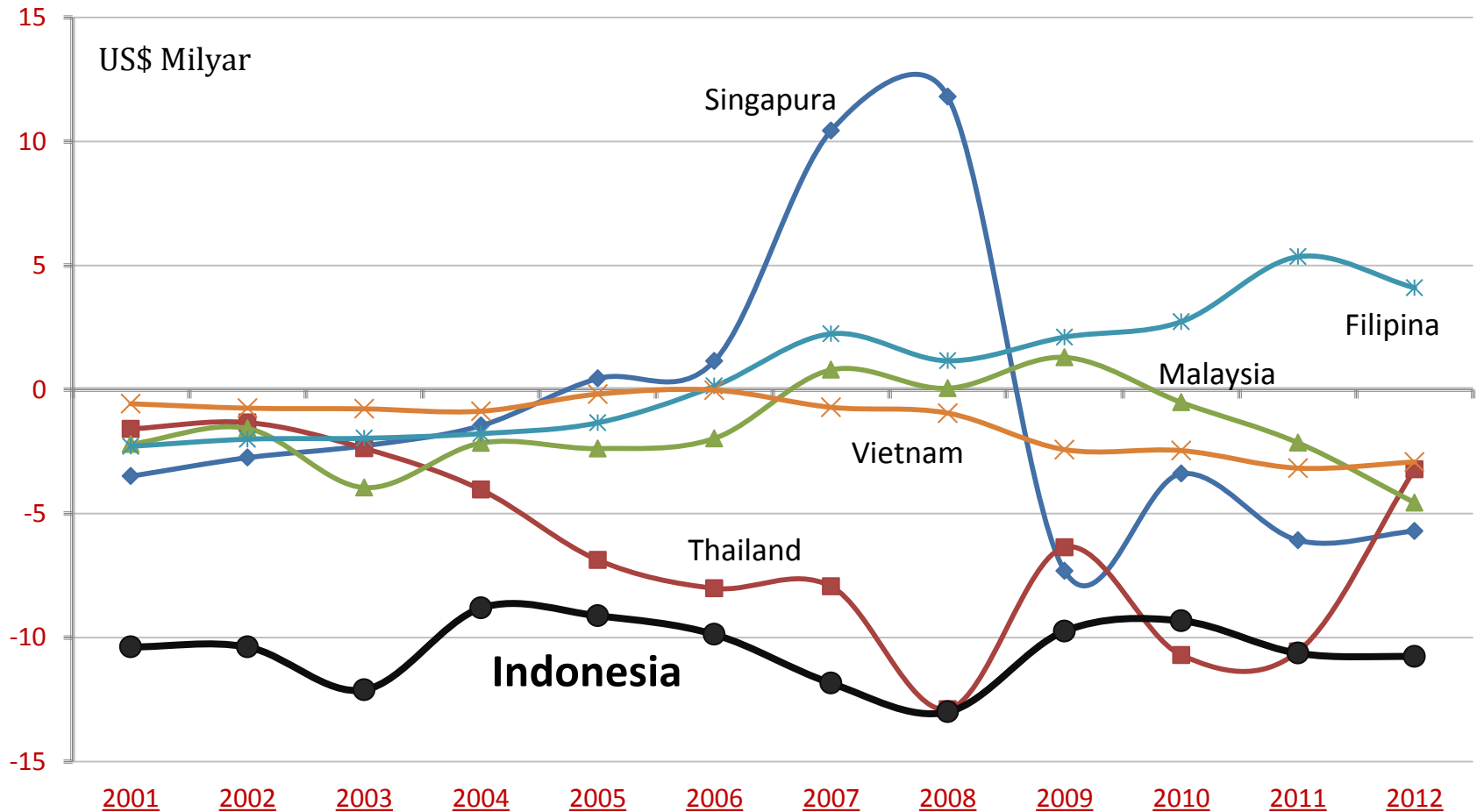
perlu strategi yang tidak memperlebar defisit perdagangan & neraca transaksi berjalan



Perdagangan Jasa ASEAN

defisit Indonesia terbesar dan persisten

dibutuhkan strategi dan kebijakan untuk menutup defisit jasa yg lebar

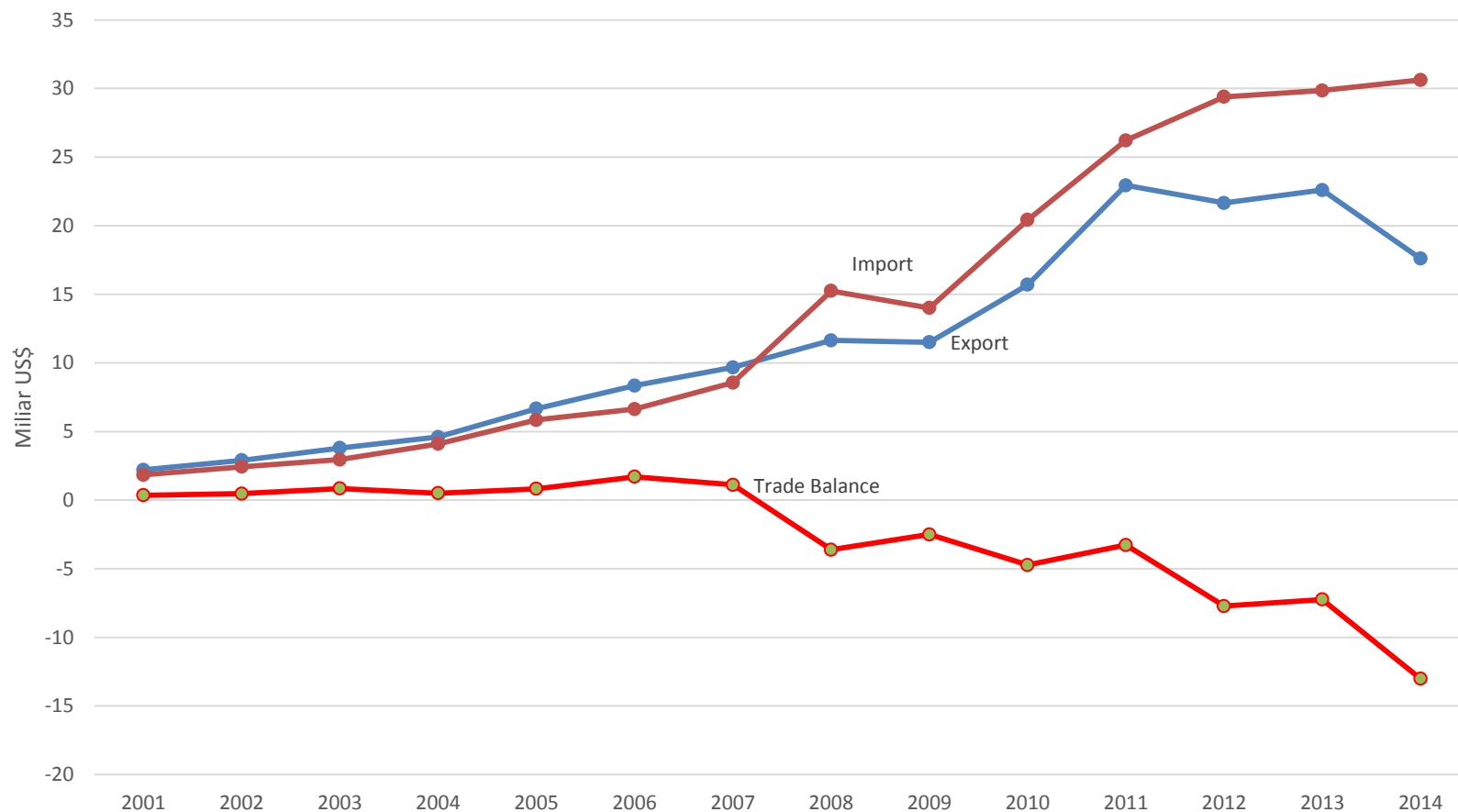


Indonesia hanya tinggal mengandalkan strategi Non-Tariff Barriers
kerjasama ekonomi yang agresif, mengakibatkan
penurunan Import Tariff yang tanpa strategi

	India (2013)	Brazil (2011)	China (2011)	Russia (2013)	Indonesia (2011)
All products	13.9	12.2	12.0	10.1	4.8
Agricultural	43.3	11.2	22.6	23.4	13.6
Industrial	11.8	12.3	11.2	9.2	4.2

Neraca Perdagangan Indonesia-China

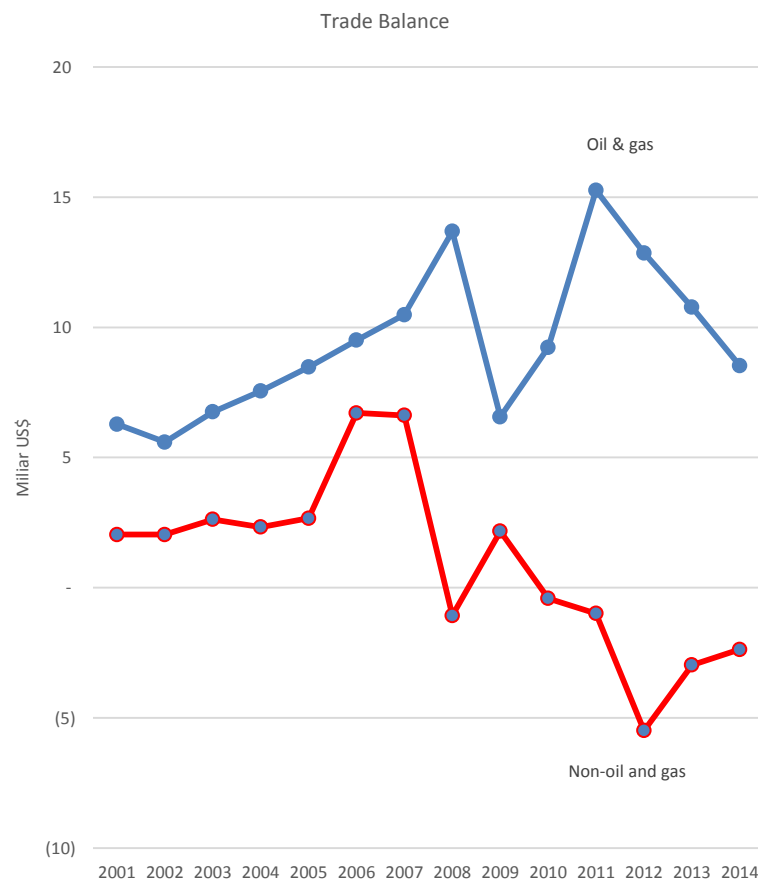
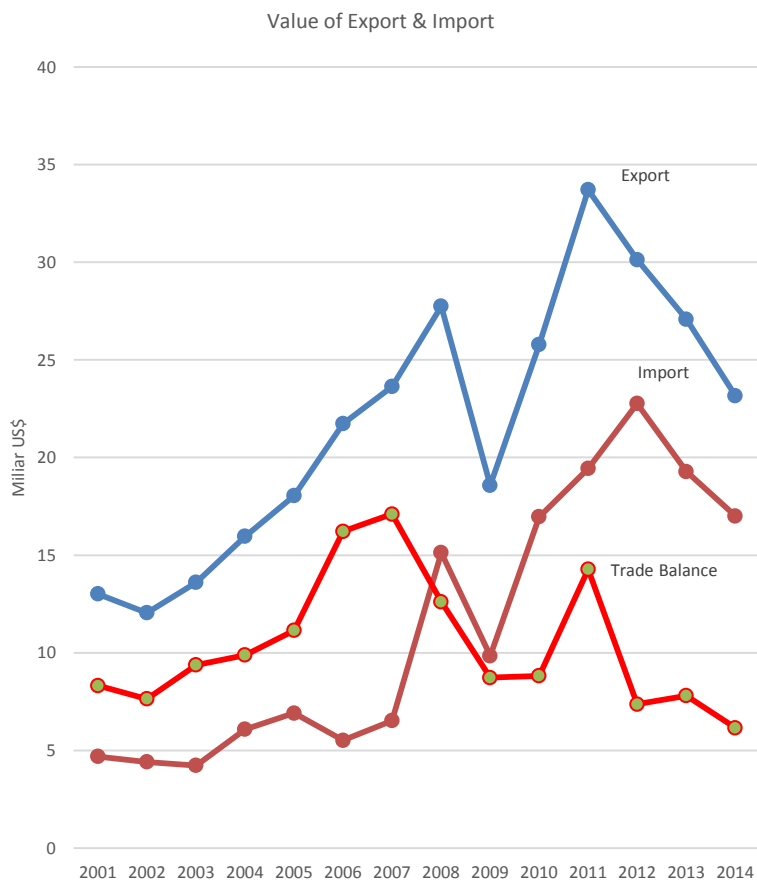
pasca CAFTA, defisit semakin membengkak



Sumber: International Trade Center

Neraca Perdagangan Indonesia-Jepang

pasca JIEPA, non migas terus mengalami defisit

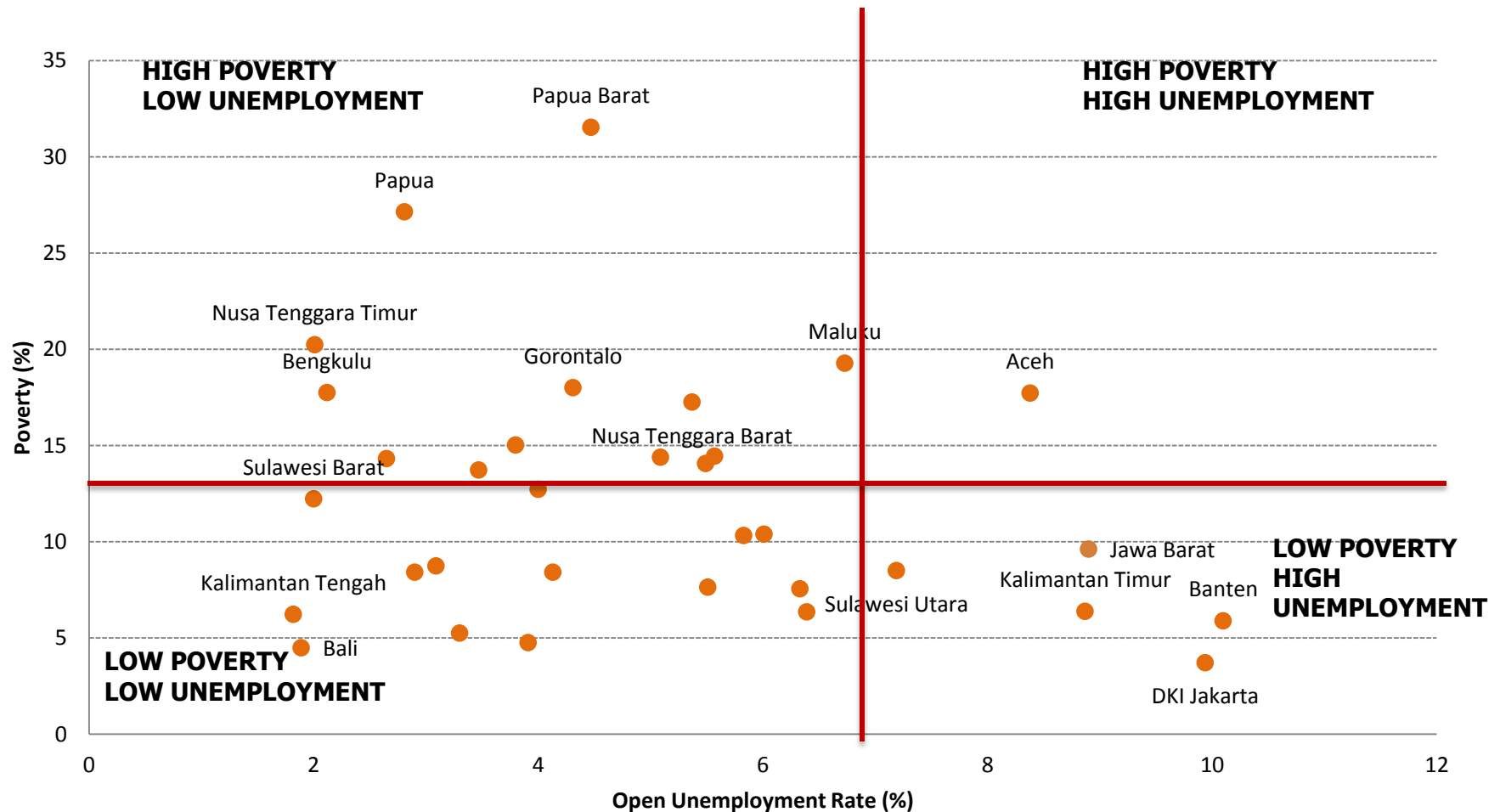


Sumber: International Trade Center

***Investasi Untuk Penyelesaian
Kemiskinan dan Pengangguran***

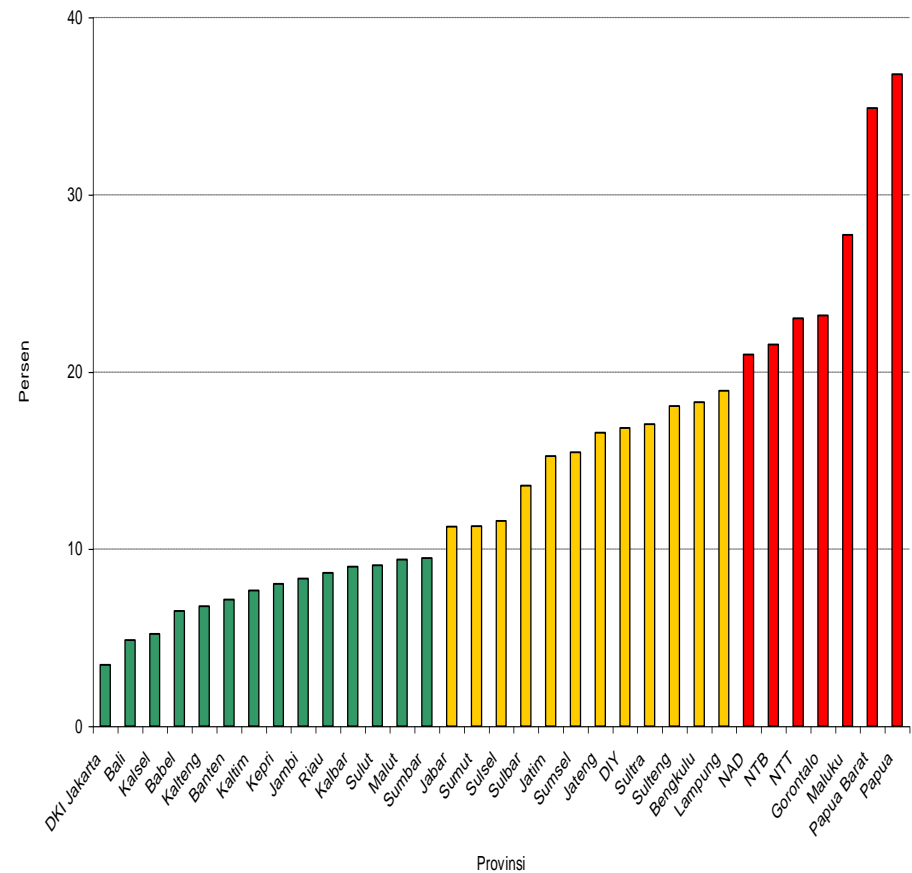
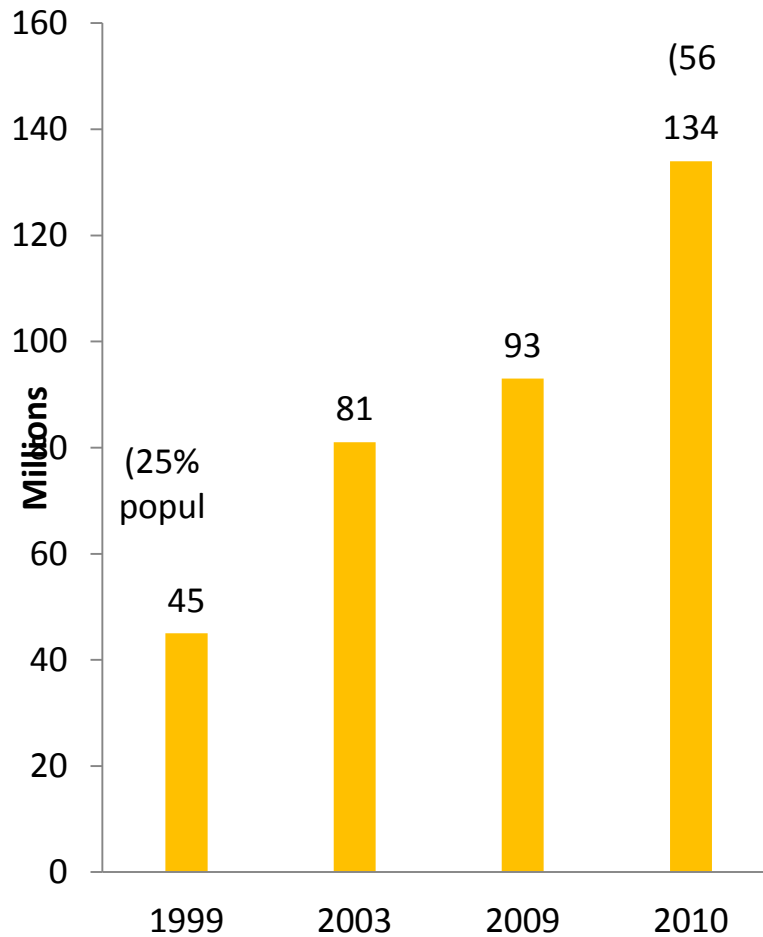
Kinerja Pertumbuhan Ekonomi

Tidak menyelesaikan kesenjangan, kemiskinan dan pengangguran



Kesenjangan Melebar

Kelas menengah baru pesat, kemiskinan masih sangat tinggi



Sumber: ADB, Bank Dunia

**Mendorong investasi bukan sekadar
mendulang Pendapatan Asli Daerah.
Perlu pertimbangan penguatan daya saing dan
penyelesaian masalah struktural**

Terimakasih